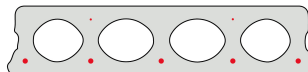


# FS130-600



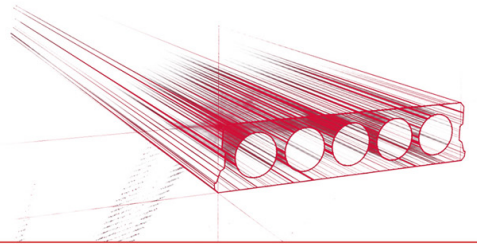
## Technische info

Hoogte	130mm
Breedte	596mm
Lengte	Wap. S500: 2,00m => 2,50m uit voorraad (per 10cm olopend) Wap. S500: 2,55m => 5,95m uit voorraad (per 5 cm olopend) Wap. S500: 6,00m => 6,50m uit voorraad (per 10cm olopend)
Brandweerstand	1 uur
Milieuklasse	XC1, XC2, XC3 (andere op bestelling)
Transportgewicht	1,92 kN/m <sup>2</sup>
Gewicht/ m	1,15 kN/m
Rekengewicht	2,06 kN/m <sup>2</sup>
Kanaalvulling	7,18 l/m
Vulbeton	5,8l/m <sup>2</sup>
Betonkwaliteit	C 50/60
Staalkwaliteit	f(pk) 1860;f(pk) 1920; f(p0,1k) 1580

## Overspanningen

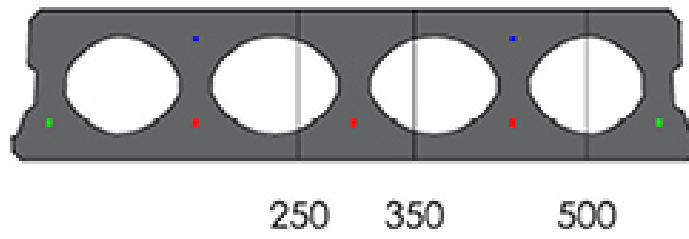
Zie hiervoor onze online rekenmodule





## Pasplaten

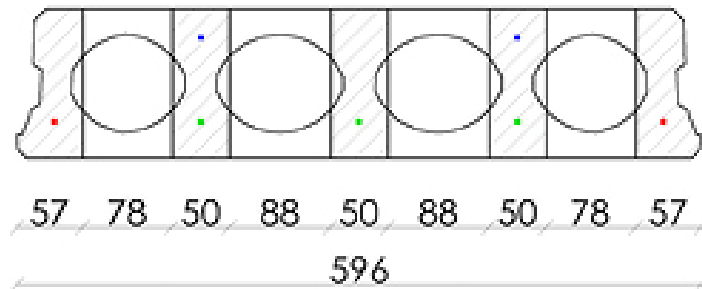
---

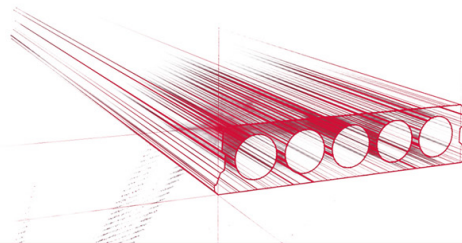




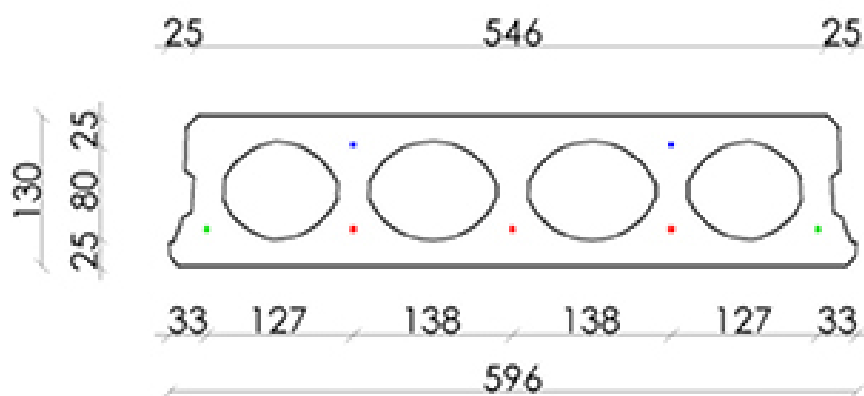
## Booradvies

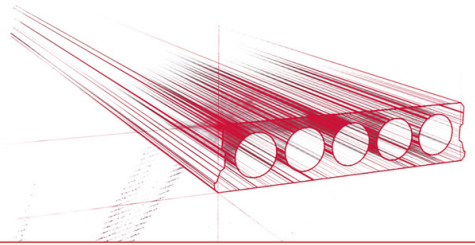
---





## Wapeningspositie



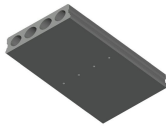


## Supplementen

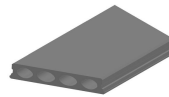
---



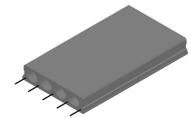
Pasplaten -  
Voorgespannen



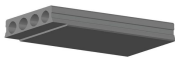
Ontwateringsgaatjes



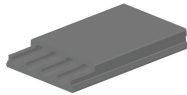
Schuinzagen/inkorten



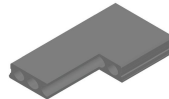
Uitstekende wapening



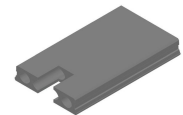
Verdunde onderzijde



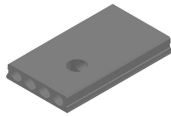
Verdunde bovenzijde



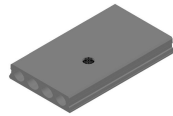
Hoeksparing



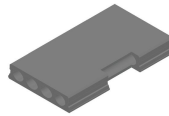
Kopsparing



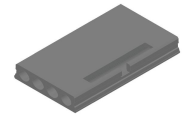
Ronde sparing



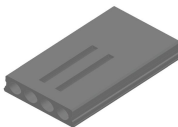
Ronde sparing + CD



Zijsparing



Hamerkop



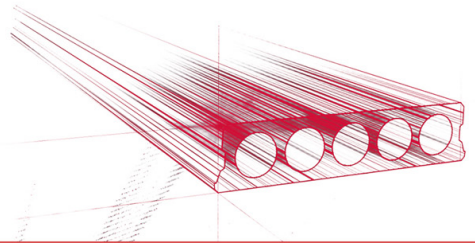
Opengemaakte kanalen



Open kanalen met  
inhangwapening



Raveelijzers -  
Voorgespannen



## Voorraad

	Productie	Afhaalbaar	Op voorraad
Malle 1			
Malle 2			
Frederickx		X	X
Tessenderlo	X	X	X

