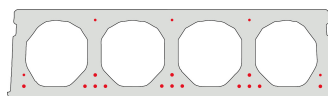
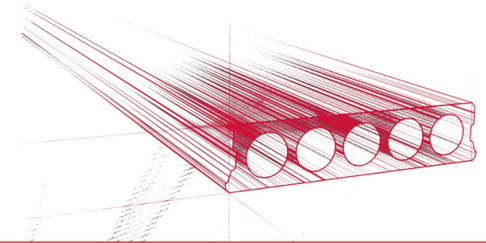


FS320-1200



Technische info

Hoogte	320mm
Breedte	1200mm
Brandweerstand	1 uur (2u op bestelling)
Milieuklasse	XC1; XC2; XC3 (andere op bestelling)
Transportgewicht	3,78 kN/m ²
Gewicht/ m	4,54 kN/m
Rekengewicht	4,04 kN/m ²
Kanaalvulling	46,66 l/m
Vulbeton	10,3 l/m ²
Betonkwaliteit	C 50/60
Staalkwaliteit	f(pk) 1860; f(p0,1k) 1580

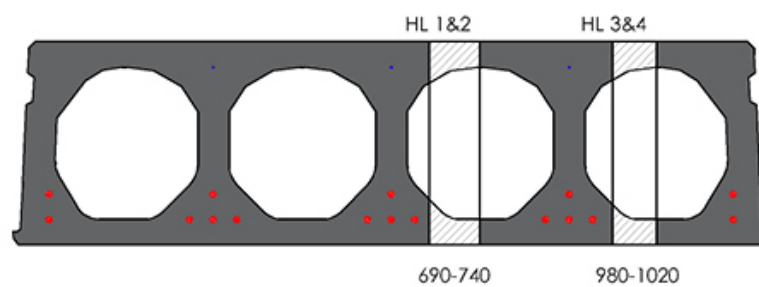


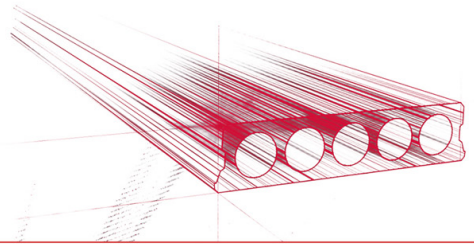
Overspanningen

Zie hiervoor onze online rekenmodule

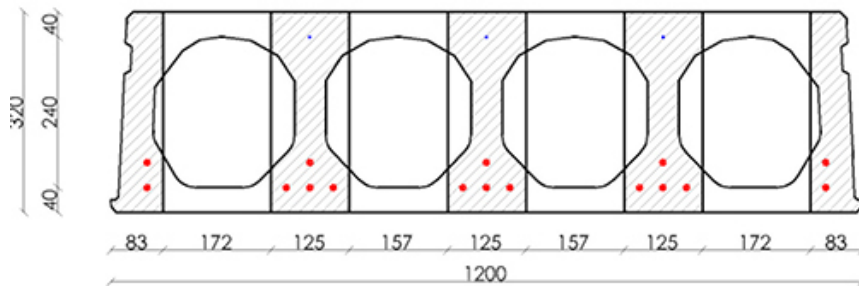


Pasplaten

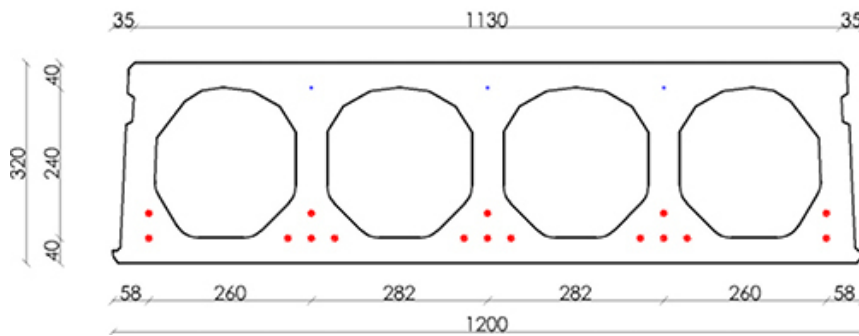


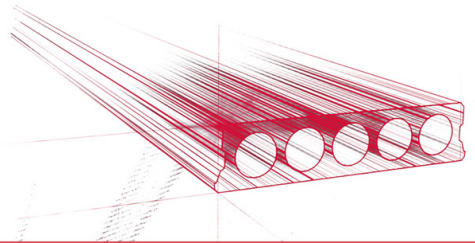


Booradvies



Wapeningspositie

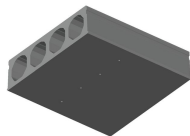




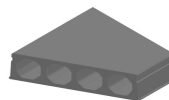
Supplementen



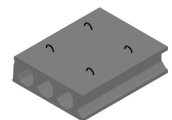
Pasplaten -
Voorgespannen



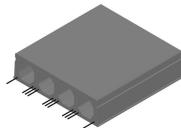
Ontwateringsgaatjes



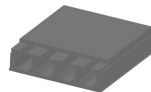
Schuinzagen/inkorten



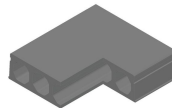
Hijsslussen



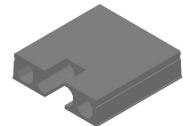
Uitstekende wapening



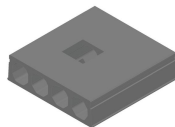
Verdunde bovenzijde



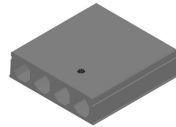
Hoeksparing



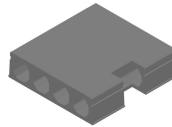
Kopsparing



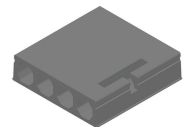
Middensparing



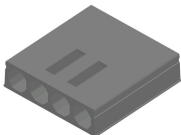
Ronde sparing + CD



Zijsparing



Hamerkop



Opengemaakte kanalen



Open kanalen met
inhangwapening



Raveelijzers -
Voorgespannen



Verdiepte sparing



Voorraad

	Productie	Afhaalbaar	Op voorraad
Malle 1			
Malle 2	X	X	
Frederickx			
Tessenderlo	X	X	

