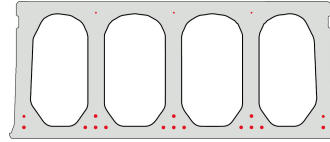
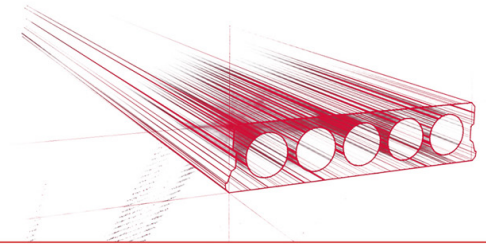


FS500-1200



Technische info

Hoogte	500
Breedte	1200
Brandweerstand	1 uur (2u op bestelling)
Milieuklasse	XC1; XC2; XC3 (andere op bestelling)
Transportgewicht	5,50 kN/m ²
Gewicht/ m	6,60 kN/m
Rekengewicht	5,96 kN/m ²
Kanaalvulling	83,37 l/m
Vulbeton	18,80 l/m ²
Betonkwaliteit	C 50/60
Staalkwaliteit	f(pk) 1860; f(p0,1k) 1580

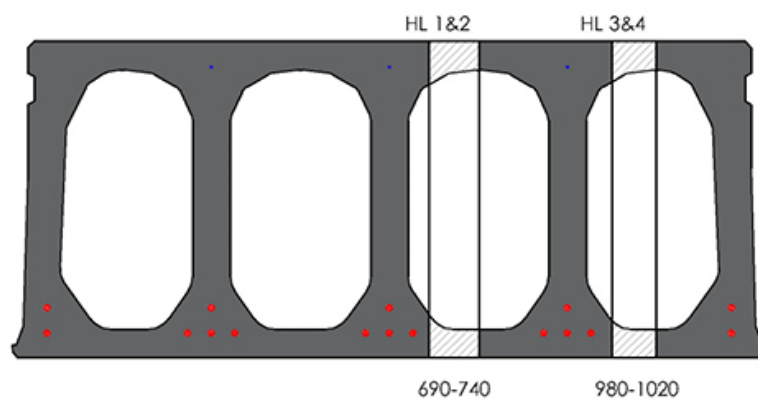


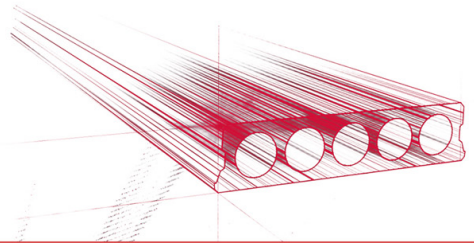
Overspanningen

Zie hiervoor onze online rekenmodule

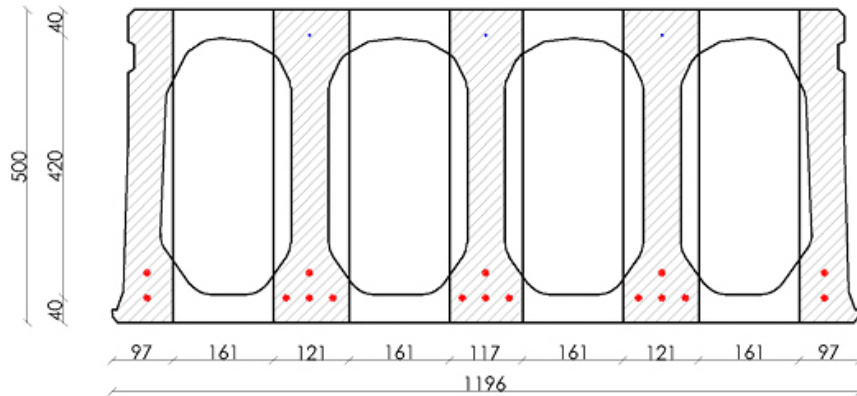


Pasplaten

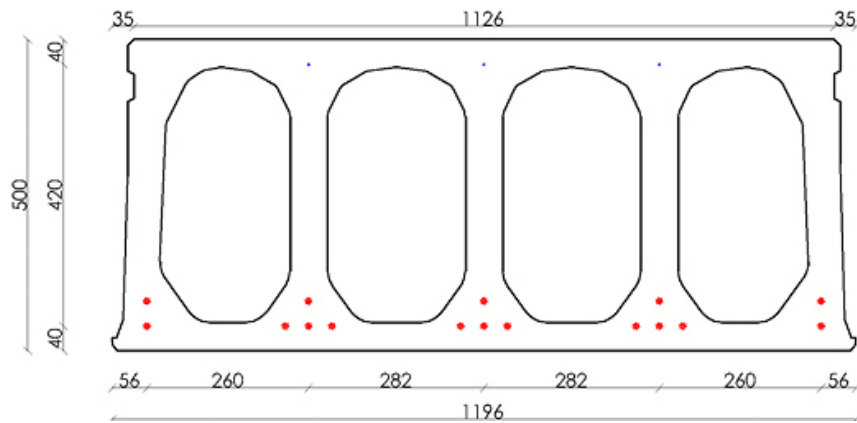


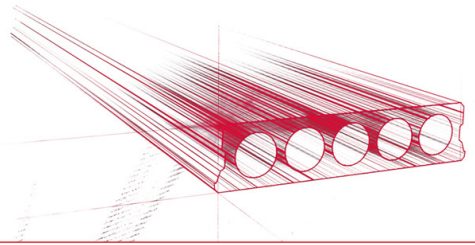


Booradvies



Wapeningspositie

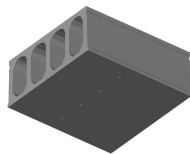




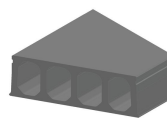
Supplementen



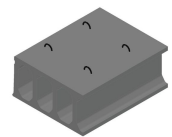
Pasplaten -
Voorgespannen



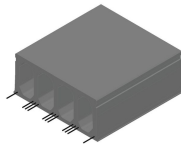
Ontwateringsgaatjes



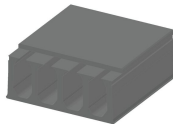
Schuinzagen/inkorten



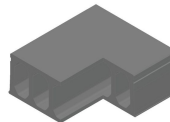
Hijsslussen



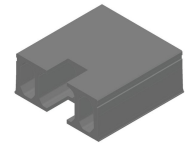
Uitstekende wapening



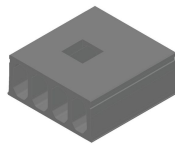
Verdunde bovenzijde



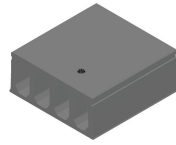
Hoeksparing



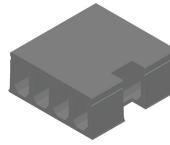
Kopsparing



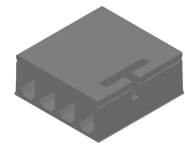
Middensparing



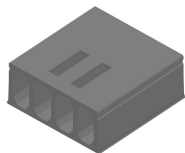
Ronde sparing + CD



Zijsparing



Hamerkop



Opengemaakte kanalen



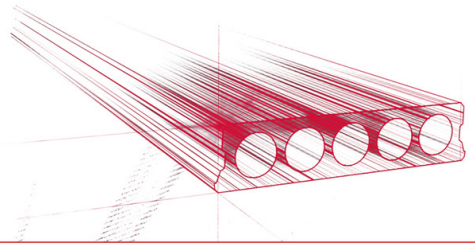
Open kanalen met
inhangwapening



Raveelijzers -
Voorgespannen



Verdiepte sparing



Voorraad

	Productie	Afhaalbaar	Op voorraad
Malle 1			
Malle 2			
Frederickx			
Tessenderlo	X	X	

